

## Parent2Parent® factsheet for schools

### The Parent2Parent® programme

National research has repeatedly demonstrated that parents and carers are the most influential factor in the long-term academic success of their children. In addition, recent research in Hertfordshire has identified that strong partnerships between schools and parents are a key factor in raising attainment by pupils across all phases.

In response to the evidence and requests from schools, Herts for Learning (HfL) has developed a parental education programme, **Parent2Parent®**, aimed at helping parents and carers to improve the learning experience at home by embedding key teaching and learning behaviours.

The **Parent2Parent®** programme provides a support service to schools, enabling parents and carers to gain confidence and new skills that will actively support learning at home. By offering this education-focused support programme, it is believed that:

- children's educational outcomes will improve
- parental involvement and relationships with schools will become stronger

The **Parent2Parent®** programme is available to primary, secondary and special schools.



## What is Parent2Parent®?

| Parent2Parent® is:  | Parent2Parent® is not:  |
|---|---|
| <p><b>Collaborative</b> – it helps parents/carers understand the foundations of child development and the approaches used by schools.</p>                                       | <p><b>Curriculum and homework</b> – it is not focused on the curriculum and homework, but on generic learning themes such as how our minds work, how confidence affects our learning and how to model and build positive relationships.</p> |
| <p><b>Practical</b> – it draws on real life experiences, providing opportunities for parents/carers to explore activities which they can use in the home.</p>                   | <p><b>Divisive</b> – it is not intended to be divisive, but to promote greater understanding and collaboration between home and school.</p>   |
| <p><b>Theory based</b> – modules are built on relevant educational theory and research, illustrated through discussions and a range of activities.</p>                          | <p><b>A parenting course</b> – it is not a parenting course, and is not designed to challenge or promote any parenting styles.</p>  |
| <p><b>Topical</b> – its content addresses current hot topics such as resilience, independent learning and aspiration building.</p>  | <p><b>Exclusive</b> – it has not been developed exclusively for parents/carers of children with difficulties. It is a universal programme, which has an impact on children from all backgrounds and all walks of life.</p>                  |
| <p><b>Thought provoking</b> – the model encourages parents/carers to reflect on their own beliefs, how they learn and ways of enhancing their child’s educational outcomes.</p> | <p><b>Academic</b> – parents/carers do not require any academic qualifications to participate, they just need to be interested and motivated to support their child to become the best learner they can be.</p>                             |

The **Parent2Parent®** programme adopts a modular approach, with each module focused on a different learning technique. The programme comprises six practical modules, which are delivered in school to parents and carers.

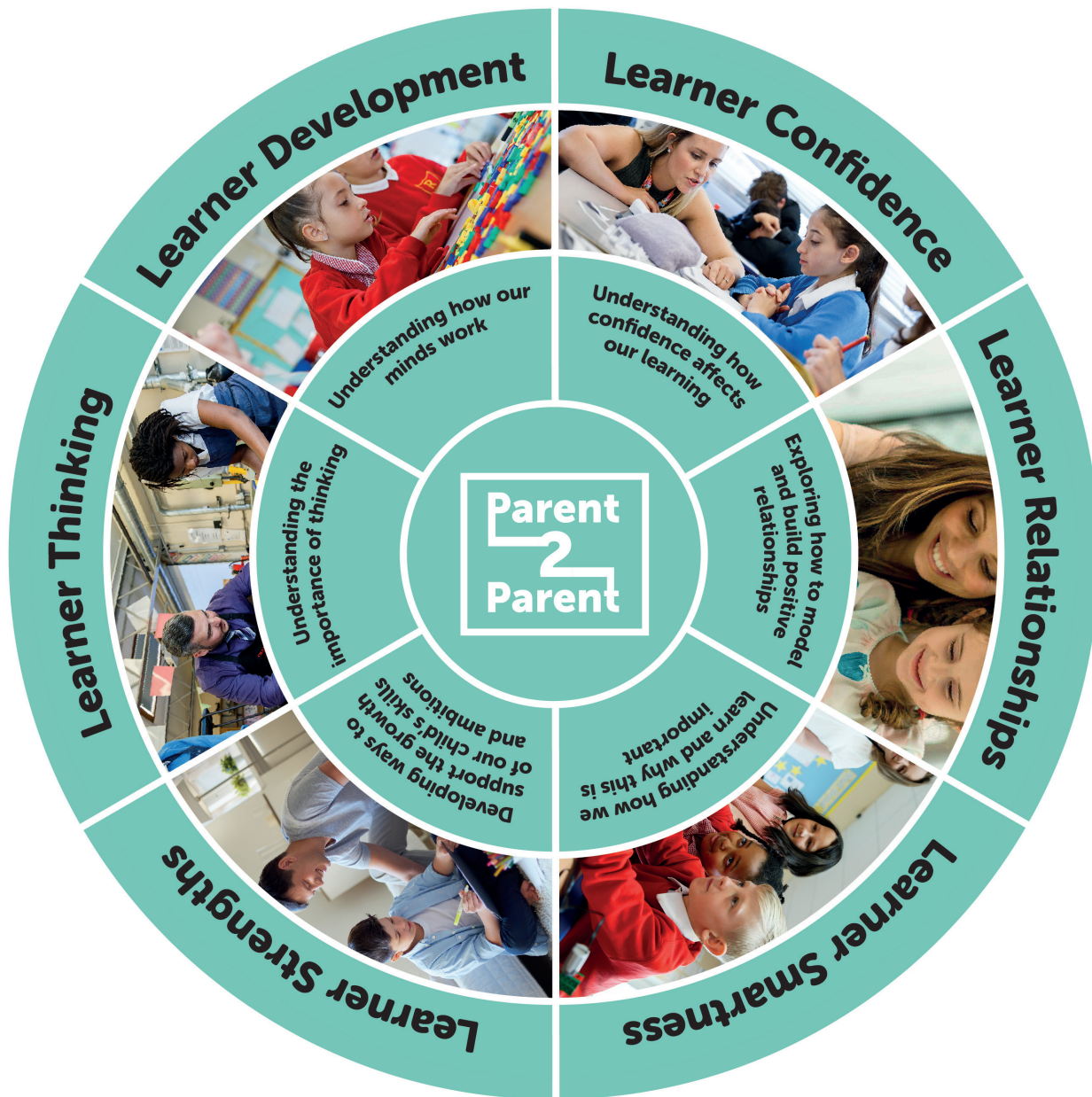




## The Parent2Parent® Learner Wheel

The modules are displayed in the Parent2Parent® Learner Wheel and have been designed to illustrate what we know about how the brain works, gender difference in learning, the fight/flight response, transactional analysis, fixed and growth mindsets, learning styles, emotional intelligence, plus risk and resilience.

The programme shares with parents/carers how they can use these techniques to support their child's learning.



The **Parent2Parent®** programme has been successfully delivered in a number of schools across Hertfordshire, in differing socio-economic areas. The response from schools and the participating parents/carers has been positive.

#### Parents said:

“ I really like the ‘Learner Pit’. It made me realise that I don’t like to do something unless I think I’m going to do it well and I think I have passed that on to my son. If something is difficult he just doesn’t want to know. We sat down and talked about how it’s okay to feel angry or frustrated when something is difficult and if you keep going, it gets better and you have that lovely feeling of achievement at the end. He knows now that finding something hard means that he is learning – and he keeps going! ”

“ I’ve been thinking a lot about ‘helicopter parenting’ and how much I have been doing for my children. I think I rescue them too much when they should be doing it for themselves. It’s made me stand back a bit more and offer some help or ideas - but not take over. ”

#### A headteacher said:

“ For those parents who embrace the information and are open to letting it modify their thinking, this course really is life changing. Parent2Parent® empowers parents to understand their children better and support them to develop into positive, successful learners. ”

#### The Parent2Parent® model

Schools can subscribe individually to the service, and an HfL **Parent2Parent®** trainer will deliver the programme to parents in their school. Please note that the suggested maximum number of parents attending each module is 20.

Alternatively, schools may cluster together and subscribe to the service, with the programme being delivered in an agreed location to parents/carers from the cluster schools.

On completion of the programme, parents/carers that have attended the programme have the option to be trained as a **Parent2Parent®** trainer, known as a Parent Lead. Once this training has been successfully completed, they can deliver the **Parent2Parent®** programme to other parents in their school.

A Parent Lead could be a parent/carer, a parent governor, or a teaching assistant who is passionate about getting involved with children's education and their attainment.

The qualities required to be a Parent Lead include a commitment to the aims of the programme, a readiness to support other parents/carers, and a desire to develop their own knowledge and understanding about how children learn. A degree of self-confidence is helpful and this is further developed and supported through attending the Parent Lead training sessions.

Parent Leads must attend a minimum of ten hours of training. On successful completion of the training, they will be licensed to deliver the **Parent2Parent®** programme and will be provided with the training resources required for each module.

Parent Lead delivery will be quality assured by HfL advisers on an ongoing basis. Once a Parent Lead has delivered three **Parent2Parent®** programmes (each comprising six modules), they will gain 'Advanced' status. Programmes must be delivered within a two year period to qualify for Advanced status.





## Cost

The cost of subscribing to the **Parent2Parent®** programme is £1,235, which includes delivery of the six **Parent2Parent®** modules, plus resources for parents, which can be taken home and used after the programme.

If schools opt to cluster, this cost will be shared between the cluster schools.

### Schools subscribing to the programme will receive:

- a marketing support pack to promote the programme to parents
- delivery of six modules (maximum 20 parents attending per module)
- an evaluation summary following the delivery of the programme

Once a parent/carer has completed the programme, they can apply to be trained as a Parent Lead. The cost for this training for up to two parents to attend is £1235. For this, schools will receive:

- an initial two hour consultation with an HfL **Parent2Parent®** trainer to design and prepare a **Parent2Parent®** programme for their school
- a marketing support pack to promote the programme to parents
- a minimum of ten hours training for a Parent Lead
- quality assurance and supervision throughout the training and programme delivery by HfL **Parent2Parent®** trainers
- an evaluation summary following the delivery of the programme
- online and telephone support for Parent Leads throughout the training and programme delivery

All costs associated with the **Parent2Parent®** programme can be met through Pupil Premium funding, where appropriate.



## Benefits to schools

Many schools would like to improve their approach to parental engagement and build stronger partnerships with parents/carers. The **Parent2Parent®** modules are designed to complement existing programmes, covering themes such as eSafety, literacy, early years and numeracy, rather than replace them.

Parents working as partners with schools in the learning process can potentially improve pupil outcomes, thereby supporting the school improvement agenda. By participating in **Parent2Parent®**, schools will be able to actively support and promote parental engagement, without creating additional workload for their staff, and will be awarded HfL's new **Investor in Parents** status.

## Investor in Parents status

Investor in Parents has been developed by HfL to highlight schools that are committed to, and are actively involved in, engaging with parents/carers.

Three status levels are available: bronze, silver and gold. Schools will be awarded the appropriate status, based on their ongoing commitment to the **Parent2Parent®** programme, and will receive the Investor in Parents logo, which can be displayed on relevant school materials.



**Bronze status** – schools must complete one **Parent2Parent®** programme (six modules), with a minimum of five parents/carers participating in each module.



**Silver status** – schools must complete two **Parent2Parent®** programmes (six modules per programme), with a minimum of ten parents/carers participating in each module or one **Parent2Parent®** programme (six modules), with a minimum of twenty parents participating in each module.



**Gold status** – schools must complete two Parent2parent programmes (six modules in each programme), with a minimum of fifteen parents/carers participating in each module. It is highly desirable that the school has a trained parent lead that delivers the second programme. Schools must also have clear evidence that a range of activities and programmes adopted by the school or setting are having demonstrable impact on a child's learning as a result of working in partnership with parents/carers. This evidence will be detailed on a whole-school self-evaluation and review matrix and a moderation visit by HfL will be carried out.

Additional cost: One day consultancy fee which will include a half day visit to review practice and talk with stakeholders, plus a written report and certificate.



If you are interested in subscribing to the **Parent2Parent®** programme for your school, please contact the **Parent2Parent®** team at [p2p@hertsforlearning.co.uk](mailto:p2p@hertsforlearning.co.uk) or call **01438 845111**.

An individual school or a cluster of schools subscribes to **Parent2Parent®**



The **Parent2Parent®** programme is delivered in a school or to a cluster of schools



Parents/carers that have attended the **Parent2Parent®** programme are trained as Parent Leads



School awarded 'Investor in Parents' status



Parent Leads deliver the **Parent2Parent®** programme to parents in school

